



**The leading European research association
for sustainable and multimodal mobility**

ECTRI in a nutshell

The European Conference of Transport Research Institutes (**ECTRI**) is an international non-profit association, founded in 2003. It is the first attempt to unite the forces of the foremost multimodal transport research organisations across Europe and to thereby promote the excellence of European transport research. Today, it includes 27 major transport research institutes or universities from 20 European countries. Together, they account for more than 4,000 researchers in the field of transport.

Vision

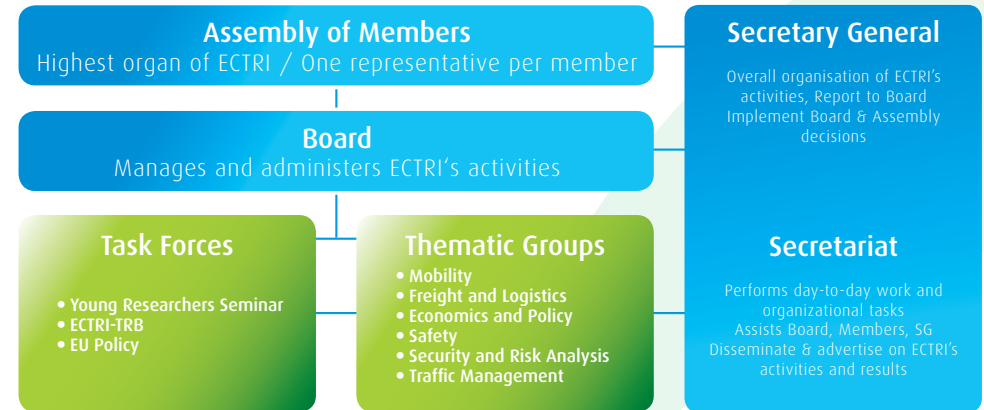
ECTRI is the leading European research association for sustainable and multimodal mobility.

Mission

ECTRI promotes green, safe, efficient, and inclusive transport for people and goods by:

- Promoting transport research and enhancing its scientific quality and effectiveness;
- Providing independent, evidence-based advice to decision-makers in Europe;
- Incorporating and representing the foremost European transport research institutes and universities.

Organisational Structure



Strategic objectives

ECTRI's vision and mission are implemented through six strategic objectives:

- Shaping the future European Research Area (ERA)
- Promoting participation in R&D projects
- Servicing its Members through information, exchange and representation
- Fostering education and training
- Disseminating research results
- Joining research capabilities and infrastructures

Shaping the future European Research Area (ERA)

Partnerships and cooperation

ECTRI is engaged in collaborative activities where it supports the development of the ERA, working in close cooperation with other transport stakeholders, building on the strong presence and involvement of **ECTRI** Members.

On the European scene, **ECTRI** fosters cooperation with major transport related organisations such as **EARPA, ERTICO, POLIS, EUCAR, UIC, UNIFE** and **UITP**. To further support the creation of the ERA in transport, the partnership with **FEHRL, FERSI** and Networks of Excellence **EURNEX** and **HUMANIST** is formalised through the European Transport Research Alliance (**ETRA**) launched in September 2012.

ECTRI also develops strong links with the **European Technology Platforms (ETP)** and forum active in all transport areas (ERTRAC, ERRAC, ALICE, Waterborne, iMobility). **ECTRI** is represented in the ETPs committees and working groups in view to help defining the needed transport research agendas that can promote a truly integrative and multimodal transport system in Europe.

ECTRI is also represented in some European initiatives such as the Joint Programming Initiative (JPI) Urban Europe or projects Advisory Groups (e.g. CIVITAS, Electromobility plus).

In 2010, **ECTRI** signed a Memorandum of Understanding (MoU) with the **Association for European Transport (AET)** to foster cooperation between the two associations notably in the frame of the European Transport Conference - ETC organized by AET, every year.

in 2006, a Memorandum of Understanding (MoU) with the TRB. This MoU is materialised through an action plan approved on a bi-annual basis, steered by a dedicated Task Force (ECTRI-TRB TF). Lastly **ECTRI** cooperates with the **International Transport Forum (ITF)** of the OECD in view to support the preparation of the Annual summit.

Advising on European transport policy

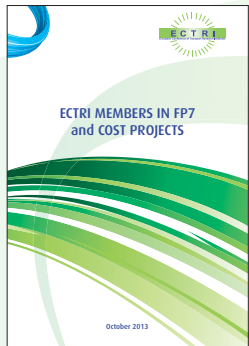
In view to support European policies and programmes and to push towards an integrated, efficient and sustainable transport system, **ECTRI** provides independent and evidence-based advice to decision makers in Europe. In that view **ECTRI** keeps close contact and interacts with the **European Commission'** (EC) services dealing with transport research (DG RDI, MOVE and CONNECT). In particular **ECTRI** issues **position papers** to input Framework- and Work-Programmes (FP6, FP7 & H2020) and to respond to relevant consultations of the EC in the field of transport. For the complete list, please visit the ECTRI website.

A strong and effective mechanism for obtaining common positions in today's most pressing transport issues as well as achieving scientifically sound and well documented solutions to transport problems are the **ECTRI Thematic Groups (TG) and Task Force (TF)**, which are linked to the core scientific competences of **ECTRI** Members. At present **ECTRI** has six TGs in the areas of Mobility, Freight and Logistics, Economics and Policy, Safety, Security and Risk Analysis and Traffic Management; and a Task Force on European transport research and policy. A leaflet presenting more detailed information on the TGs is available.



Internationally, building on the strong involvement of **ECTRI** Members with the **Transportation Research Board (TRB)** of the US National Academies, **ECTRI** signed

Promoting participation in R&D projects



ECTRI Members are major players and most valued providers of research capacity in transport research programmes at National and European level. **ECTRI** looks for increasing the number and success rate of its Members' initiated R&D projects. Through effective networking and cooperation within its Thematic Groups, **ECTRI** has supported the development of **several projects** by directly helping formation of consortia and proposal preparation and when funded, dissemination of research results.

In fact, **ECTRI** Members are involved in **58 projects** of the first call of **Horizon 2020**, including 10 on Aviation, 5 on Rail, 8 on Road, 2 on Water, 4 on Urban, 1 on Logistics, 3 on ITS, 4 on Infrastructure, 2 on Socio-economics and 19 on Green Vehicles. **ECTRI** Members are also currently involved in **6 COST running actions**.

Over the past 10 years, **ECTRI** Members were involved in **172 projects** of the **7th Framework Programme (FP)** and Competitiveness and Innovation Framework Programme (CIP), in **113 projects** of the **6th FP**, and in **10 COST actions**.

ECTRI, as an association, also has taken up the **leadership of five horizontal projects** of high strategic character e.g. NET-TRACK, EURFORUM, DETRA, EUTRAIN and more recently **SETRIS**; all were funded by the EU FP.

Servicing its Members through information, exchange and representation

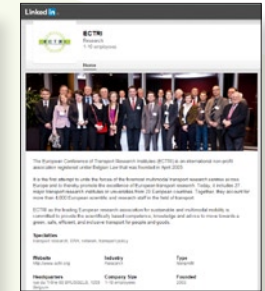
Benefitting from information, knowledge exchange and representation is an essential service for the Members.

A communication plan defines the means and content of the information dissemination according to the Members' needs. In particular, **ECTRI** provides its Members with **advanced and targeted information** on ongoing and/or planned developments in e.g. European transport research and policy, calls for proposals and tenders, Publications, Conferences and events, and news from other EU transport and research stakeholders.

Moreover, **ECTRI promotes the activities and interests of its Members** through its website and social media (LinkedIn). **ECTRI** also actively **represents them at selected events and conferences** in view to have its voice more convincingly heard in support of high quality and effective transport research in Europe.

The image is a screenshot of the ECTRI website's "Info from Brussels" page, dated February 2016. It features a table with a list of events and conferences, including dates, titles, and locations. The table is organized into sections like "Upcoming events" and "Past events".

Date	Event	Location
11	ECTRI Board Meeting	Brussels
12	Next 17th European Parliament	Brussels
13	ECTRI activities	Brussels
14	ECTRI activities	Brussels
15	ECTRI activities	Brussels
16	ECTRI activities	Brussels
17	ECTRI activities	Brussels
18	ECTRI activities	Brussels
19	ECTRI activities	Brussels
20	ECTRI activities	Brussels
21	ECTRI activities	Brussels
22	ECTRI activities	Brussels
23	ECTRI activities	Brussels
24	ECTRI activities	Brussels
25	ECTRI activities	Brussels
26	ECTRI activities	Brussels
27	ECTRI activities	Brussels
28	ECTRI activities	Brussels
29	ECTRI activities	Brussels
30	ECTRI activities	Brussels
31	ECTRI activities	Brussels
32	ECTRI activities	Brussels
33	ECTRI activities	Brussels
34	ECTRI activities	Brussels
35	ECTRI activities	Brussels
36	ECTRI activities	Brussels
37	ECTRI activities	Brussels
38	ECTRI activities	Brussels
39	ECTRI activities	Brussels
40	ECTRI activities	Brussels
41	ECTRI activities	Brussels
42	ECTRI activities	Brussels
43	ECTRI activities	Brussels
44	ECTRI activities	Brussels
45	ECTRI activities	Brussels
46	ECTRI activities	Brussels
47	ECTRI activities	Brussels
48	ECTRI activities	Brussels
49	ECTRI activities	Brussels
50	ECTRI activities	Brussels
51	ECTRI activities	Brussels
52	ECTRI activities	Brussels
53	ECTRI activities	Brussels
54	ECTRI activities	Brussels
55	ECTRI activities	Brussels
56	ECTRI activities	Brussels
57	ECTRI activities	Brussels
58	ECTRI activities	Brussels
59	ECTRI activities	Brussels
60	ECTRI activities	Brussels
61	ECTRI activities	Brussels
62	ECTRI activities	Brussels
63	ECTRI activities	Brussels
64	ECTRI activities	Brussels
65	ECTRI activities	Brussels
66	ECTRI activities	Brussels
67	ECTRI activities	Brussels
68	ECTRI activities	Brussels
69	ECTRI activities	Brussels
70	ECTRI activities	Brussels
71	ECTRI activities	Brussels
72	ECTRI activities	Brussels
73	ECTRI activities	Brussels
74	ECTRI activities	Brussels
75	ECTRI activities	Brussels
76	ECTRI activities	Brussels
77	ECTRI activities	Brussels
78	ECTRI activities	Brussels
79	ECTRI activities	Brussels
80	ECTRI activities	Brussels
81	ECTRI activities	Brussels
82	ECTRI activities	Brussels
83	ECTRI activities	Brussels
84	ECTRI activities	Brussels
85	ECTRI activities	Brussels
86	ECTRI activities	Brussels
87	ECTRI activities	Brussels
88	ECTRI activities	Brussels
89	ECTRI activities	Brussels
90	ECTRI activities	Brussels
91	ECTRI activities	Brussels
92	ECTRI activities	Brussels
93	ECTRI activities	Brussels
94	ECTRI activities	Brussels
95	ECTRI activities	Brussels
96	ECTRI activities	Brussels
97	ECTRI activities	Brussels
98	ECTRI activities	Brussels
99	ECTRI activities	Brussels
100	ECTRI activities	Brussels



Fostering education and training

Attracting and preparing a new generation of researchers and professionals to deal with the challenges of an increasingly complex transport system are among the main priorities of **ECTRI**.

ECTRI initiated, in cooperation with FEHRL and FERSI, the bi-annual **Young Researchers Seminar (YRS)**. This seminar offers the opportunity to a network of young transport researchers from **ECTRI**, FEHRL and FERSI Members and from research organisations across the US to gather and interact for 3 days. During the Seminar, young researchers are able to improve their presentation skills in written and oral scientific communication by tutorial means. Their tutoring is done by senior researchers who themselves are acting in a truly international scientific culture. For each edition, a dedicated Task Force (TF Young Researchers Seminar) is established to perform the knowledge transfer and support the Seminar host institution.

Seven Seminars have taken place since 2003 in different European locations. The **next one** will be held in **Berlin from May 16-18, 2017**.



Disseminating research results

ECTRI considers the dissemination of scientific knowledge and research results as essential.



To support such dissemination, **ECTRI** has created the **European Transport Research Review (ETRR)**, an Open Access journal published by Springer and indexed by Thomson Reuters. The ETRR is a multidisciplinary scientific journal dedicated to transport and covering all fields of transport. Its aims are the publication of high quality scientific papers, dissemination of new ideas and developments, publication of information papers, books and conference reviews. For submitting articles or for more information: <http://link.springer.com/journal/12544>.

To assure optimal dissemination of research results, **ECTRI** also actively supports in various forms (e.g. participation in Committees, reviewing, chairs, speakers, organisation of sessions or dissemination on the Conference) the major **International scientific Conferences** i.e. European Transport Conference (**ETC**); Transport Research Arena (**TRA**);

TRB Annual Meetings; OECD International Transport Forum (**ITF**); Road Safety on Five Continents (**RS5C**); and World Conference on Transport Research (**WCTR**).

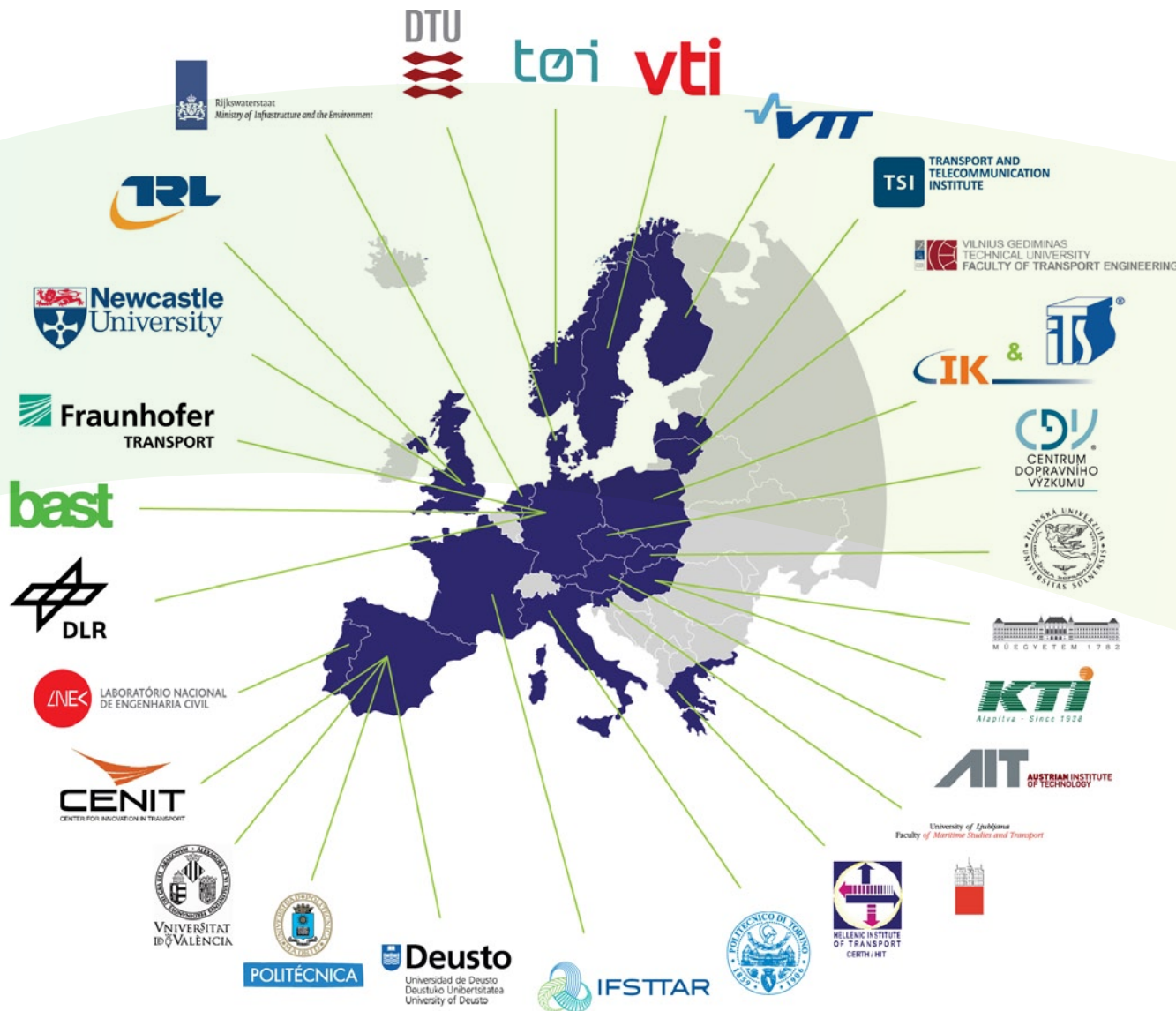
Joining research capabilities and infrastructures

Benefiting from being an association and incorporating the foremost European transport research institutes, the **definition of common research priorities and structures** for joining Members' research capabilities and infrastructures has high relevance for **ECTRI**. In this regard, **ECTRI** seeks to provide a **full and up-to-dated information** of the Members' capabilities and infrastructures, a **common framework** for using them as well as a culture of **mutual understanding** and willingness to join capabilities and infrastructures.

ECTRI Members – Fields of Expertise

	AIT	BASt	BME	COV	CENIT	DLR	DEUSTO	DTU	FHG-FVV	HIT	IFSTTAR	ITS & IK	KTI	LINEC	POLITO	RWS-WWL	TOI	TRL	TTI	UL	UNEW	UNIZA	UPM	UVEG	VG TU TIF	VTI	VTI	
Freight Transport & Logistics																												
Mobility & Travel Behaviour																												
Modeling																												
Passenger Transport																												
Safety & Security																												
Transport & Economics																												
Transport & Ergonomics																												
Transport & Telematics																												
Transport & Environment																												
Transport Infrastructure																												
Transport System Management																												
Vehicle Technology																												

Blue / green coloured blocks indicate involvement or expertise in that area for the Member



Membership

ECTRI Members are research establishments with head offices in Europe, full legal personality and tasked with considerable activities of public interest in the field of transport research (and in particular in multimodal issues).

Interested in becoming a Member?

Download our brochure on key information and conditions and the application form from the website.



Contact details:

ECTRI Office :

Rue du Trône 98 • 1050 Brussels • Belgium

info@ectri.org

+32 (0)2 500 56 88

www.ectri.org